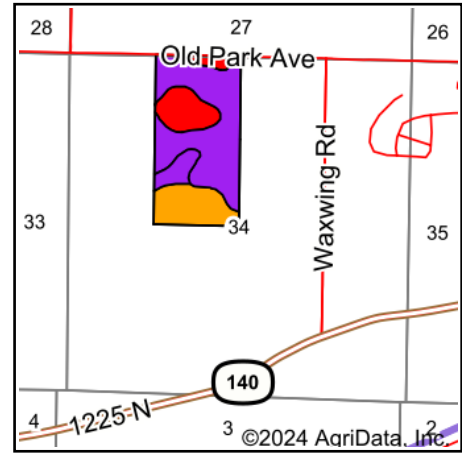
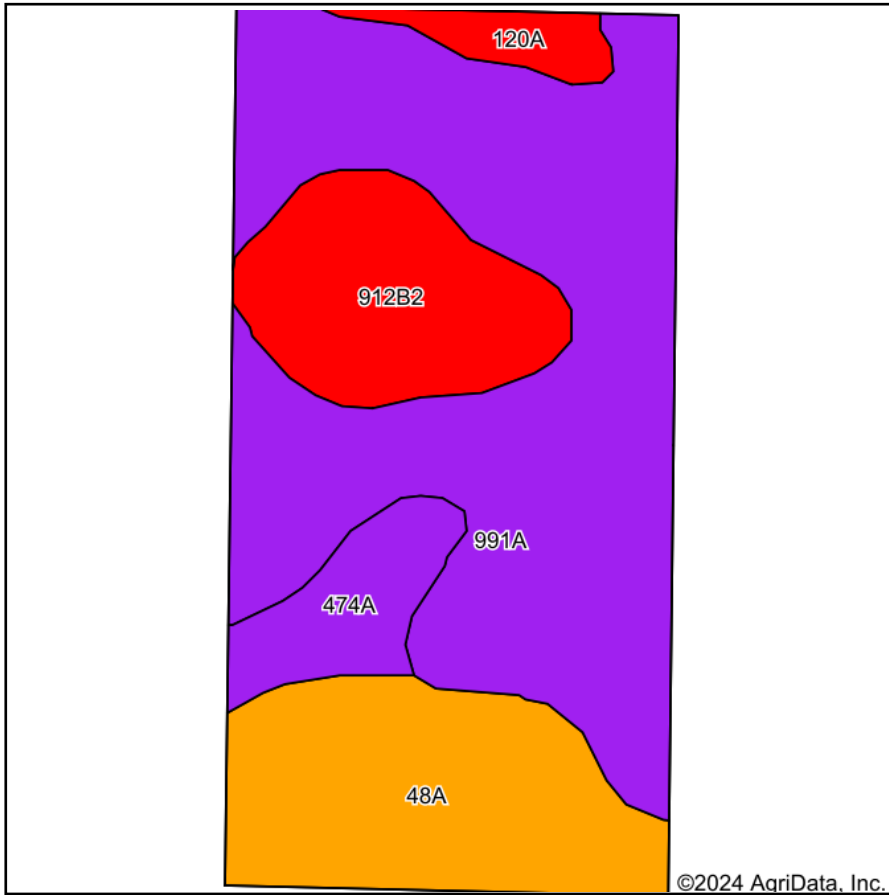


Soils Map



State: **Illinois**
 County: **Bond**
 Location: **34-6N-2W**
 Township: **Mulberry Grove**
 Acres: **80.5**
 Date: **7/1/2024**



Soils data provided by USDA and NRCS.

Area Symbol: IL005, Soil Area Version: 19

| Code | Soil Description | Acres | Percent of field | Il. State Productivity Index Legend | Subsoil rooting a | Corn Bu/A | Soybeans Bu/A | Wheat Bu/A | Oats Bu/A b | Sorghum c Bu/A | Grass-le gume e hay, T/A | Crop productivity index for optimum management | *n NCCPI Soybeans |
|-------------------------|--|-------|------------------|-------------------------------------|-------------------|--------------|---------------|-------------|-------------|----------------|--------------------------|--|-------------------|
| 991A | Cisne-Huey silt loams, 0 to 2 percent slopes | 44.74 | 55.6% | | FAV | 129 | 45 | 51 | 0 | 104 | 4.50 | 99 | 59 |
| 48A | Ebbert silt loam, 0 to 2 percent slopes | 16.50 | 20.5% | | FAV | 173 | 55 | 66 | 0 | 124 | 5.10 | 125 | 53 |
| **912B2 | Hoyleton-Darmstadt silt loams, 2 to 5 percent slopes, eroded | 11.60 | 14.4% | | FAV | **124 | **42 | **48 | 0 | **100 | **3.50 | **95 | 54 |
| 474A | Piasa silt loam, 0 to 2 percent slopes | 5.32 | 6.6% | | UNF | 136 | 48 | 53 | 66 | 0 | 4.00 | 104 | 35 |
| 120A | Huey silt loam, 0 to 2 percent slopes | 2.34 | 2.9% | | UNF | 109 | 43 | 43 | 0 | 95 | 3.50 | 89 | 45 |
| Weighted Average | | | | | | 137.2 | 46.8 | 53.5 | 4.4 | 100.4 | 4.4 | 103.8 | *n 55.1 |



Table: Optimum Crop Productivity Ratings for Illinois Soil EFOTG are sourced from Bulletin 811 calculated Map Unit Base Yield Indices, and adjusted (Adj) for slope, erosion, flooding, and surface texture. Publication Date: 02-08-2023

Crop yields and productivity (B811 EFOTG) are maintained at the following USDA web site: 2023 Illinois Soil Productivity and Yield Indices:

<https://efotg.sc.egov.usda.gov/#/state/IL/documents/section=2&folder=52809>

** Base indexes from Bulletin 811 adjusted for slope, erosion, flooding, and surface texture according to the II. Soils EFOTG

b Soils in the southern region were not rated for oats and are shown with a zero "0".

c Soils in the northern region or in both regions were not rated for grain sorghum and are shown with a zero "0".

e Soils in the well drained group were not rated for grass-legume and are shown with a zero "0".

*n: The aggregation method is "Weighted Average using all components"